

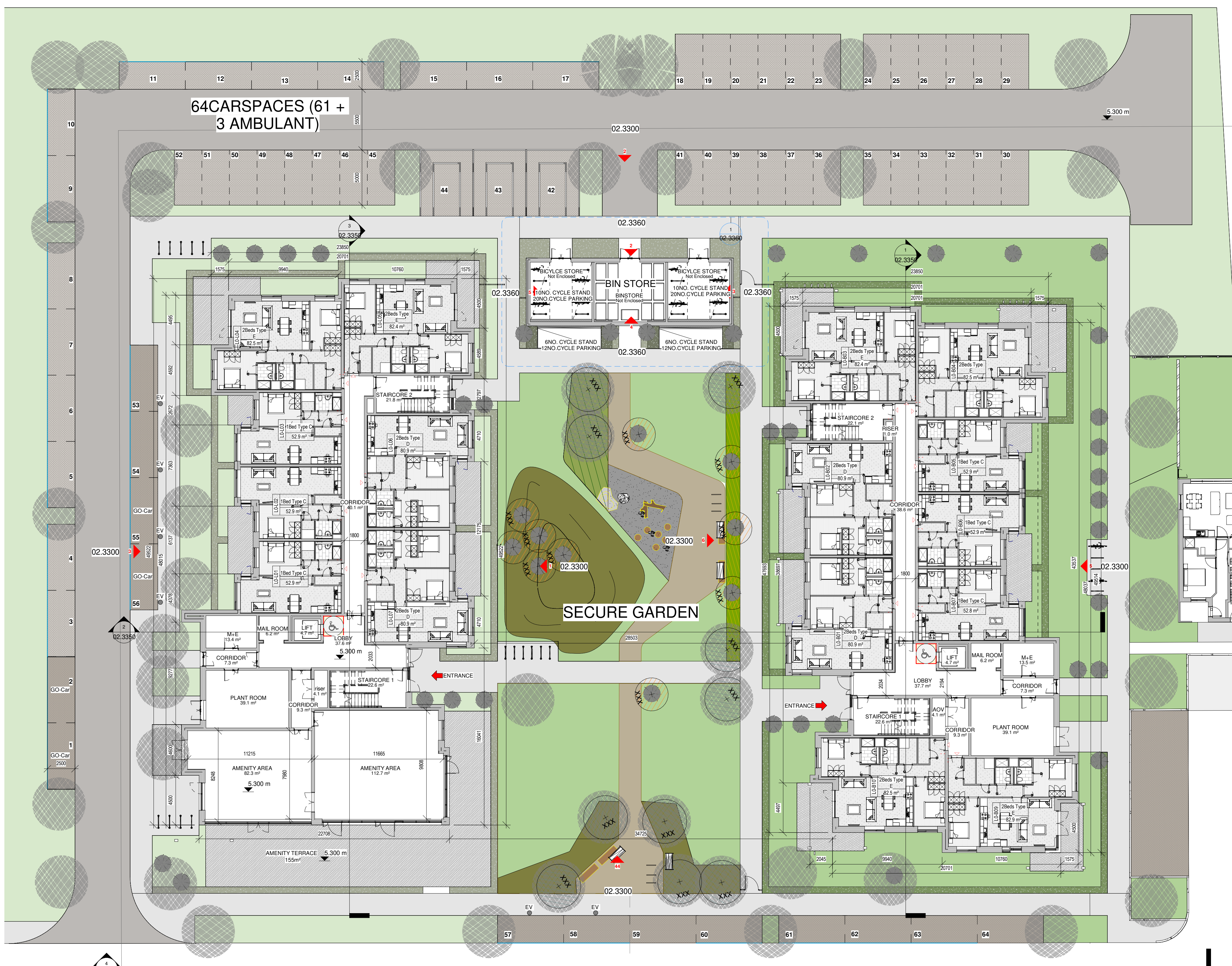
Level	Name	Area
A-L00 - Ground Floor	BLOCK A L00	945 m ²
A-L00 - Ground Floor	BLOCK B L00	910 m ²
A-L01 - First Floor	BLOCK A L01	920 m ²
A-L01 - First Floor	BLOCK B L01	920 m ²
A-L02 - Second Floor	BLOCK A L02	920 m ²
A-L02 - Second Floor	BLOCK B L02	920 m ²
A-L03 - Third Floor	BLOCK A L03	920 m ²
A-L03 - Third Floor	BLOCK B L03	920 m ²
A-L04 - Fourth Floor	BLOCK A L04	920 m ²
A-L04 - Fourth Floor	BLOCK B L04	920 m ²
Grand total:		8,290 m ²

Level	Name	Department	Area
Not Placed	M+E	ANCILLARY	0.0 m ²
ANCILLARY: 1			0.0 m ²
A-L00 - Ground Floor	AMENITY AREA	AMENITY	195.0 m ²
AMENITY: 2			195.0 m ²
A-L00 - Ground Floor	M+E	ANCILLARY	13.4 m ²
A-L00 - Ground Floor	MAIL ROOM	ANCILLARY	6.2 m ²
A-L00 - Ground Floor	PLANT ROOM	ANCILLARY	39.1 m ²
A-L00 - Ground Floor	RISER	ANCILLARY	0.8 m ²
A-L00 - Ground Floor	riser	ANCILLARY	4.1 m ²
ANCILLARY: 5			63.5 m ²
A-L00 - Ground Floor	CORRIDOR	CIRCULATION	56.7 m ²
A-L00 - Ground Floor	LIFT	CIRCULATION	4.7 m ²
A-L00 - Ground Floor	LOBBY	CIRCULATION	37.6 m ²
A-L00 - Ground Floor	STAIRCORE 1	CIRCULATION	22.6 m ²
A-L00 - Ground Floor	STAIRCORE 2	CIRCULATION	21.8 m ²
CIRCULATION: 7			143.4 m ²
B-L00 - Ground Floor	AOV	ANCILLARY	4.1 m ²
B-L00 - Ground Floor	M+E	ANCILLARY	13.5 m ²
B-L00 - Ground Floor	MAIL ROOM	ANCILLARY	6.2 m ²
B-L00 - Ground Floor	PLANT ROOM	ANCILLARY	39.1 m ²
B-L00 - Ground Floor	RISER	ANCILLARY	1.0 m ²
ANCILLARY: 5			63.8 m ²
B-L00 - Ground Floor	CORRIDOR	CIRCULATION	55.2 m ²
B-L00 - Ground Floor	LIFT	CIRCULATION	4.7 m ²
B-L00 - Ground Floor	LOBBY	CIRCULATION	37.7 m ²
B-L00 - Ground Floor	STAIRCORE 1	CIRCULATION	22.6 m ²
B-L00 - Ground Floor	STAIRCORE 2	CIRCULATION	22.1 m ²
CIRCULATION: 7			142.2 m ²
A-L01 - First Floor	M+E	ANCILLARY	9.9 m ²
ANCILLARY: 4			9.9 m ²
A-L01 - First Floor	CORRIDOR	CIRCULATION	53.8 m ²
A-L01 - First Floor	LIFT	CIRCULATION	4.7 m ²
A-L01 - First Floor	LOBBY	CIRCULATION	26.6 m ²
A-L01 - First Floor	STAIRCORE 1	CIRCULATION	22.6 m ²
A-L01 - First Floor	STAIRCORE 2	CIRCULATION	21.8 m ²
CIRCULATION: 6			129.5 m ²
B-L01 - First Floor	CORRIDOR	CIRCULATION	53.8 m ²
B-L01 - First Floor	LOBBY	CIRCULATION	26.6 m ²
B-L01 - First Floor	STAIRCORE 1	CIRCULATION	22.6 m ²
B-L01 - First Floor	STAIRCORE 2	CIRCULATION	21.8 m ²
CIRCULATION: 5			124.8 m ²

Level	Name	Department	Area
A-L02 - Second Floor	M+E	ANCILLARY	9.7 m ²
ANCILLARY: 6			9.7 m ²
A-L02 - Second Floor	CORRIDOR	CIRCULATION	53.8 m ²
A-L02 - Second Floor	LOBBY	CIRCULATION	26.6 m ²
A-L02 - Second Floor	STAIRCORE 1	CIRCULATION	22.6 m ²
A-L02 - Second Floor	STAIRCORE 2	CIRCULATION	21.8 m ²
CIRCULATION: 5			124.8 m ²
B-L02 - Second Floor	CORRIDOR	CIRCULATION	53.8 m ²
B-L02 - Second Floor	LOBBY	CIRCULATION	26.6 m ²
B-L02 - Second Floor	STAIRCORE 1	CIRCULATION	22.6 m ²
B-L02 - Second Floor	STAIRCORE 2	CIRCULATION	21.8 m ²
CIRCULATION: 5			124.8 m ²
A-L03 - Third Floor	M+E	ANCILLARY	1.5 m ²
A-L03 - Third Floor	M+E	ANCILLARY	8.1 m ²
ANCILLARY: 4			9.7 m ²
A-L03 - Third Floor	CORRIDOR	CIRCULATION	53.8 m ²
A-L03 - Third Floor	LOBBY	CIRCULATION	26.6 m ²
A-L03 - Third Floor	STAIRCORE 1	CIRCULATION	22.6 m ²
A-L03 - Third Floor	STAIRCORE 2	CIRCULATION	21.8 m ²
CIRCULATION: 5			124.8 m ²
B-L03 - Third Floor	CORRIDOR	CIRCULATION	53.8 m ²
B-L03 - Third Floor	LOBBY	CIRCULATION	26.6 m ²
B-L03 - Third Floor	STAIRCORE 1	CIRCULATION	22.6 m ²
B-L03 - Third Floor	STAIRCORE 2	CIRCULATION	21.8 m ²
CIRCULATION: 5			124.8 m ²
A-L04 - Fourth Floor	CORRIDOR	CIRCULATION	53.8 m ²
A-L04 - Fourth Floor	LOBBY	CIRCULATION	26.6 m ²
A-L04 - Fourth Floor	STAIRCORE 1	CIRCULATION	22.6 m ²
A-L04 - Fourth Floor	STAIRCORE 2	CIRCULATION	21.8 m ²
CIRCULATION: 5			124.8 m ²
B-L04 - Fourth Floor	CORRIDOR	CIRCULATION	53.8 m ²
B-L04 - Fourth Floor	LOBBY	CIRCULATION	26.6 m ²
B-L04 - Fourth Floor	STAIRCORE 1	CIRCULATION	22.6 m ²
B-L04 - Fourth Floor	STAIRCORE 2	CIRCULATION	21.8 m ²
CIRCULATION: 5			124.8 m ²
77			1,515.9 m ²

Level	Name	Area
A-L00 - Ground Floor	1Bed Type C	52.9 m ²
A-L00 - Ground Floor	1Bed Type C	52.9 m ²
A-L00 - Ground Floor	1Bed Type C	52.9 m ²
A-L00 - Ground Floor	2Beds Type D	80.9 m ²
A-L00 - Ground Floor	2Beds Type D	80.9 m ²
A-L00 - Ground Floor	2Beds Type E	82.4 m ²
A-L00 - Ground Floor	2Beds Type E	82.5 m ²
A-L00 - Ground Floor: 7		485.4 m ²
B-L00 - Ground Floor	1Bed Type C	52.9 m ²
B-L00 - Ground Floor	1Bed Type C	52.9 m ²
B-L00 - Ground Floor	1Bed Type C	52.8 m ²
B-L00 - Ground Floor	2Beds Type D	80.9 m ²
B-L00 - Ground Floor	2Beds Type D	80.9 m ²
B-L00 - Ground Floor	2Beds Type E	82.4 m ²
B-L00 - Ground Floor	2Beds Type E	82.5 m ²
B-L00 - Ground Floor	2Beds Type E	82.5 m ²
B-L00 - Ground Floor	2Beds Type E	82.5 m ²
B-L00 - Ground Floor: 9		650.7 m ²
A-L01 - First Floor	1Bed Type C	52.9 m ²
A-L01 - First Floor	1Bed Type C	52.9 m ²
A-L01 - First Floor	2Beds Type D	80.9 m ²
A-L01 - First Floor	2Beds Type D	80.9 m ²
A-L01 - First Floor	2Beds Type E	82.4 m ²
A-L01 - First Floor	2Beds Type E	82.4 m ²
A-L01 - First Floor	2Beds Type E	82.4 m ²
A-L01 - First Floor	2Beds Type E	82.4 m ²
A-L01 - First Floor	2Beds Type E	82.4 m ²
A-L01 - First Floor: 10		731.1 m ²
B-L01 - First Floor	1Bed Type C	52.9 m ²
B-L01 - First Floor	1Bed Type C	52.9 m ²
B-L01 - First Floor	2Beds Type D	80.9 m ²
B-L01 - First Floor	2Beds Type D	80.9 m ²
B-L01 - First Floor	2Beds Type E	82.4 m ²
B-L01 - First Floor	2Beds Type E	82.4 m ²
B-L01 - First Floor	2Beds Type E	82.4 m ²
B-L01 - First Floor	2Beds Type E	82.4 m ²
B-L01 - First Floor: 10		731.1 m ²
A-L02 - Second Floor	1Bed Type C	52.9 m ²
A-L02 - Second Floor	1Bed Type C	52.9 m ²
A-L02 - Second Floor	1Bed Type C	52.9 m ²
A-L02 - Second Floor	2Beds Type D	80.9 m ²
A-L02 - Second Floor	2Beds Type D	80.9 m ²
A-L02 - Second Floor	2Beds Type E	82.4 m ²
A-L02 - Second Floor	2Beds Type E	82.4 m ²
A-L02 - Second Floor	2Beds Type E	82.4 m ²
A-L02 - Second Floor	2Beds Type E	82.4 m ²
A-L02 - Second Floor	2Beds Type E	82.4 m ²

Level	Name	Area
A-L02 - Second Floor: 10		731.1 m ²
B-L02 - Second Floor	1Bed Type C	52.9 m ²
B-L02 - Second Floor	1Bed Type C	52.9 m ²
B-L02 - Second Floor	1Bed Type C	52.9 m ²
B-L02 - Second Floor	2Beds Type D	80.9 m ²
B-L02 - Second Floor	2Beds Type D	80.9 m ²
B-L02 - Second Floor	2Beds Type E	82.4 m ²
B-L02 - Second Floor	2Beds Type E	82.4 m ²
B-L02 - Second Floor	2Beds Type E	82.4 m ²
B-L02 - Second Floor	2Beds Type E	82.4 m ²
B-L02 - Second Floor: 10		731.1 m ²
A-L03 - Third Floor	1Bed Type C	52.9 m ²
A-L03 - Third Floor	1Bed Type C	52.9 m ²
A-L03 - Third Floor	2Beds Type D	80.9 m ²
A-L03 - Third Floor	2Beds Type D	80.9 m ²
A-L03 - Third Floor	2Beds Type E	82.4 m ²
A-L03 - Third Floor	2Beds Type E	82.4 m ²
A-L03 - Third Floor	2Beds Type E	82.4 m ²
A-L03 - Third Floor	2Beds Type E	82.4 m ²
A-L03 - Third Floor: 10		731.1 m ²
B-L03 - Third Floor	1Bed Type C	52.9 m ²
B-L03 - Third Floor	1Bed Type C	52.9 m ²
B-L03 - Third Floor	1Bed Type C	52.9 m ²
B-L03 - Third Floor	2Beds Type D	80.9 m ²
B-L03 - Third Floor	2Beds Type D	80.9 m ²
B-L03 - Third Floor	2Beds Type E	82.4 m ²
B-L03 - Third Floor	2Beds Type E	82.4 m ²
B-L03 - Third Floor	2Beds Type E	82.4 m ²
B-L03 - Third Floor: 10		731.1 m ²
A-L04 - Fourth Floor	1Bed Type C	52.9 m ²
A-L04 - Fourth Floor	1Bed Type C	52.9 m ²
A-L04 - Fourth Floor	1Bed Type C	52.9 m ²
A-L04 - Fourth Floor	2Beds Type D	80.9 m ²
A-L04 - Fourth Floor	2Beds Type D	80.9 m ²
A-L04 - Fourth Floor	2Beds Type E	82.4 m ²
A-L04 - Fourth Floor	2Beds Type E	82.4 m ²
A-L04 - Fourth Floor	2Beds Type E	82.4 m ²
A-L04 - Fourth Floor	2Beds Type E	82.4 m ²
A-L04 - Fourth Floor: 10		731.1 m ²
Grand total:		6,253.6 m ²



Walls
Selected clay bricks to varying colours as defined in the different character areas as indicated, painted nap and cement render, exposed plaster bands around external open / lintels. Concrete or metal cills, lintels or cappings as indicated on elevations.
1 Facing Brick 1 - Red / Brown Blend with flush grey mortar
2 Facing Brick 2 - Grey brick with recessed dark grey mortar
3 Facing Brick 3 - Light Buff brick with recessed grey mortar
4 Random rubble stone cladding
5 Sand / cement nap finish to external leaf of blockwork, paint then applied.

Windows
6 Windows to be aluminium double glazed windows. External doors to be high security impact resistant timber hall doors to EN 1627 and level access threshold to approved colour. Glucose windows to bathrooms and where overlooking adjoining amenity spaces as indicated on elevation drawings.

Roof
7 Butylseal flat concrete roof. Fleece to timber battens on vapour permeable roofing underlay on timber / steel roof structure to a suitable roof pitch manufactured in compliance with EN 490:2005.
8 Low pitch roofs or canopies to be either Single ply membrane Tropic type membranes or select pressed metal roofing with standing seams.
9 Rainwater goods, downpipes etc. to be Aluminium Alloy.
10 Balustrades to be painted mild steel corgies.
11 Flat roofs to have green roof.

WT1
Wall Type 1 - Selected dark red brick with grey mortar

WT2
Wall Type 2 - Selected black brick with grey mortar

WT3
Wall Type 3 - Selected buff brick with grey mortar

WT4
Wall Type 4 - Random rubble stone cladding

WT5
Wall Type 5 - Painted render nap finish

Notes:
- Do not scale from this drawing. Use figured dimensions in all cases.
- Verify dimensions on site and report any discrepancies to the Architect immediately.
- This drawing to be read in conjunction with the Architect's Specification.
- © This drawing is copyright and may only be reproduced with the Architect's permission.

Drawing Notes:
Refer to windows, doors and curtain walling schedules for more information on details and types. Refer to all other referenced architectural drawings for more information.
Refer also to all other consultants drawings, specifications, reports and schedules including: Walsh Goodfield for structural and civil, Renaissance for MEP information, JGA for fire strategy information, Ryan & Associates for DAC information, AIT Urbanism & Landscape for landscape plan boundary details & Amplitude Acoustics for Acoustics.

Rev	Date	Drawn	Details of Issue / Revision
A	SEPT 21	A.R.	Issue for Planning

reddy architecture + urbanism

Dartry Mills, Dartry Road, Dublin 6, D06 Y0E3

T: +353 (0)1 498 7000
W: www.reddyarchitecture.com
E: info@reddyarchitecture.com

Client Details:
Voyage Property Limited,
Ashbourne Hall,
Dock Road,
Limerick.

Project Details:
Greenpark SHD
Limerick

Drawing Title:
GROUND FLOOR PLAN - APARTMENT A & B

Job No: P20-133D
Issue Date: SEPT 21
Status: S02

Sheet Size: A1
Drawn By: A Roche
Purpose of Issue: 3.0 Planning Application

Scale @A1: 1:200
Reviewed By: M.Freaney

Project-Originator-Zone-Level-Type-Role-Classification-Number: 20133-RAU-ZZ-ZR-DA-02.3200

20133-RAU-ZZ-ZR-DA-02.3200	A
----------------------------	---